

# Element ID's AuditSage™ Mobile

**AuditSage™ Mobile** was created to help companies become more efficient at inventory management. This is done by maintaining an accurate record of quantity on hand, allowing for more frequent physical counts, reducing loss, spoilage, and shrinkage through better data, and greatly reducing the overhead cost to maintain accurate and verified inventory records.

**AuditSage™ Mobile** is a flexible, complete audit package that allows users to cycle count inventory and verify that the assets on hand match what is expected. The package supports both RFID and barcode scanning and runs entirely on the handheld barcode/RFID reader. **AuditSage™** integrates seamlessly with EID's **HyperSage™ Mobile Middleware** that is used to control the handheld hardware and capture the asset data.



## Deploy In Parallel

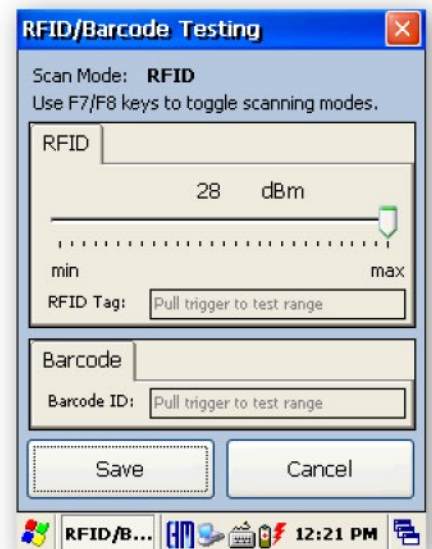
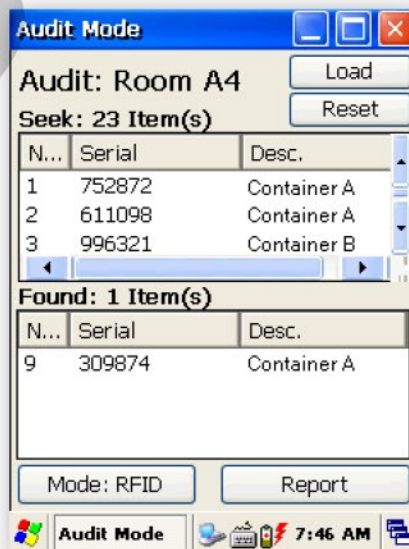
One software license is required per handheld device and each handheld unit must operate on a separate asset file. This allows for parallel cycle counting by separate location and/or asset class.

## Complete Solution

Each AuditSage Mobile Solution includes the RFID/barcode handheld scanner, EID's HyperSage Mobile Middleware, and the AuditSage software. The docking station, charging cable, and USB cable is also connected. Simply add barcodes or RFID tags (sold separately) to your assets, create files of expected assets, and the system is ready to go. Sold as a one time purchase with no mandatory license or maintenance fees. (Optional extended warranties, maintenance and support are available, but not required.)

## Applications

- Laptop/desktop/printer Tracking
- Tool Tracking
- Weapons Tracking
- Service Equipment Tracking
- Training Kit Tracking
- Spare Parts Tracking
- Valuable Asset Tracking
- Warehouse Cycle Counting
- Stock Room Cycle Counting



## How it works...

### Create and Load the Expected Asset File

The AuditSage software first imports an expected asset file. Users may have as many asset files as desired, but may only load one file at a time. Depending on the end application, these files are typically broken down by location (storage area #1, building C, closet 125, container 165474, etc) or by asset type (laptop computers, SKU 234765, 55 Gallon drums, handguns, etc). These files may be manually created using an editor or exported from ERP,WMS,Asset Tracking Software, or Excel.

### Scan the Items in the Area You Are Cycle Counting

Once the file is loaded, the user scans items in the area. As listed items are detected, they move from the "Seek" side to the "Found" side, providing an easy visual indication of cycle count status.

### Generate Reports, Dock, and Transfer to Your PC or Network

Once the user has completed the scan, two reports are generated. An **exceptions report** will produce a table listing all records of tags that have not been found and a table showing all assets that were read but are not associated with an item in the active table. An **inventory report** will produce a table listing all records of assets that have been found and a table showing all assets that were read but are not associated with an item in the active table. Once the handheld has been docked at a Windows PC, the files may be transferred and saved or printed on the local computer or network.

### Requirements

A Windows PC is required to upload asset files and download reports. All Element ID programs reside on the handheld reader and not on your network or PC.



**DARTRONICS, INC.**

PACKAGING AUTOMATION SPECIALISTS



150 WILLIAM ST. PERTH AMBOY, NJ 08861 / TOLL FREE: 800-298-8936 / PHONE: 732-324-0800 / FAX: 732-324-4488

WWW.DARTRONICS.COM

YOUTUBE / DARTRONICS

THE SINGLE SOURCE FOR YOUR

**END-OF-LINE**

PACKAGING, MARKING AND CODING NEEDS

# Element ID's HyperSage™ Mobile

**HyperSage™ Mobile** RFID middleware for handhelds greatly reduces the cost and time to deploy complete data acquisition solutions. The software provides a control interface to the handheld hardware, has the ability to process and filter the scanned RFID/barcode data, formats the data, and passes it directly to the main application. The software also provides a large color coded read/no read display with data to the user.

**HyperSage™ Mobile** generally eliminates the need for integrators or end users to learn new software development tools and write custom software.

## Hardware Control

- Controls RFID reader
- Controls barcode scanner
- Allows for single button transition between the two
- Password protected interface and hardware configuration
- Easy to use slide bar for power setting
- Simple diagnostic mode for RFID and barcode reading

## Filtering, Processing, & Displaying

- Allows user to select only the desired scanned tags to be sent to database or end application
- Easily customized to decode raw data into meaningful information for the user (*additional fees apply*)
- Large display window turns green, displays decoded data
- Vibration and tone indicators on valid reads

## Five Standard Interface Options

- 1) Streaming TCP/IP over WiFi
  - Data sent to host system
- 2) Direct-to-Webserver
  - Data sent to customer's webserver for instant insertion into database (SQL, MySQL, Oracle, etc.)
- 3) Keyboard Wedge
  - Keyboard emulation to send data directly to specific field in end application program
- 4) Terminal Emulation (VT100)
  - Preconfigured and installed VT100 terminal emulator for interface to remotely hosted applications
- 5) Data Collection File
  - Data is collected and stored locally and is then transferred to the host system when the handheld is docked in cradle or when WiFi is available

**HyperSage™ Mobile** creates a complete data acquisition solution when combined with a handheld RFID/barcode reader. It does not provide business intelligence or asset tracking capabilities. End application software must be purchased separately.

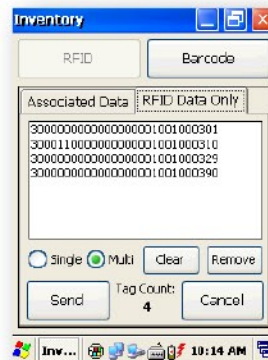


Fig. 1: Data Collection mode



Fig. 2: Customized decoded data on valid Read



Fig. 3: VT100 terminal emulation

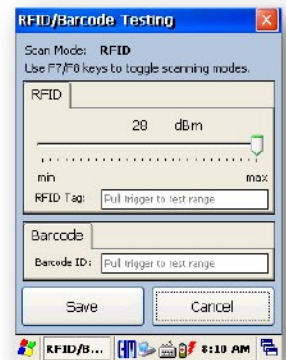


Fig. 4: Debug & power setting