

FW 400F FLOW WRAPPER

PACKAGING AIDS FW 400F FLOW WRAPPER

The **FW 400F** flow wrapper is a versatile, high performance packaging system. Capable of running printed film and producing up to 7,200 packages per hour, this compact and economical machine is the preferred choice of everyone from small start-ups to large companies with higher speed wrapping requirements.

The FW 400F flow wrapper accomplishes three tasks in one fluid and continuous operation—it forms a bag, fills it with a product, and then seals and discharges the finished package. These packages are protective, consistent, and professional looking.

The standard flow wrapper includes print registration capability with precision control for indexing pre-printed films. Product is fed into the machine either manually or automatically. The adjustable bag former accommodates a large variety of product sizes, while the digital displays and guide rulers make changeover fast and easy. The discharge conveyor provides a smooth transfer of product from the machine to an accumulation area or directly to your in-house conveyor system.

There are many options to custom tailor this machine for your application, making it ideal for a variety of industries and product types, including candy, bakery, electronics, hardware and medical products. Flexible and efficient, the FW 400F flow wrapper has the necessary capabilities to significantly increase your production rates while reducing your packaging costs.



USER BENEFITS

- Intuitive controls help assure maximum system up time for greater productivity
- Digital display indicates bag length, speed and bag count, giving operators accuracy and control over the production process
- Zig-zag end seal for easy package opening by the consumer



OPERATING BENEFITS

- Precision photocell for indexing pre-printed films
- 5 foot in-feed conveyor simplifies manual product feeding and mounting of automatic loaders
- Compact frame is appropriate for small production areas
- Discharge conveyor enables high speed operation
- Stainless steel product contact areas appropriate for everything from food to sensitive medical products

PAC Packaging Aids

Member of PAC Machinery Group

PACKAGING AIDS FW 400F FLOW WRAPPER

SET-UP BENEFITS

- Adjustable bag former accommodates various product sizes
- Single film roll holder with adjustment for quick centering of film
- Constantly heated seal jaws suitable for sealing polypropylene, barrier, laminated, and various other films

SAFETY BENEFITS

- Safety covers with magnetic switches guard heated surfaces and pinch points
- Emergency stop buttons in multiple locations for quick machine shutdown
- End seal jaw overload detection prevents damage to product and machine



Food in printed film



Adjustable bag former

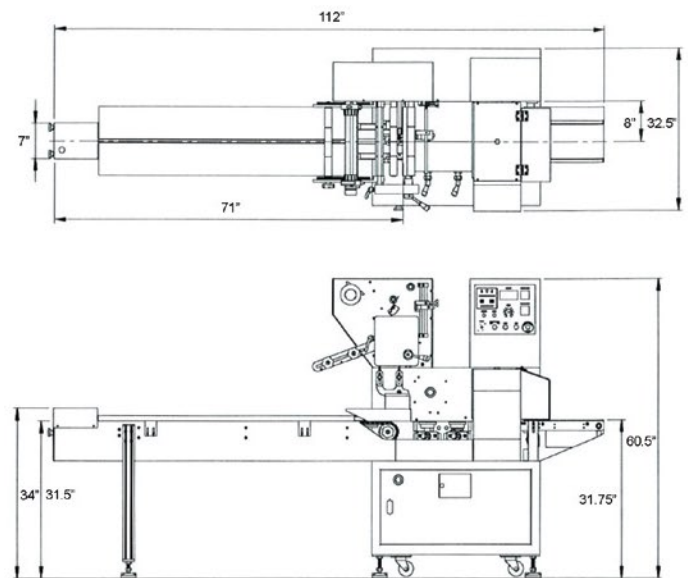


Thermal print nutritional information

OPTIONS INCLUDE

- Stainless steel frame
- Gas flush for extended shelf life
- Date/lot code printer
- Thermal transfer printer for bar codes, graphics, or nutritional information
- Straight cut knife with tear slit or tear notch
- Round or euro hang hole for hanging displays
- Delicate product conveyor carries soft or narrow products
- Water cooled transfer plates for ice cream bars or other heat sensitive products
- Fin seal brush assists product flow and flattens bag for tighter packaging
- End seal brush aids product transfer onto discharge conveyor

FW400F DIAGRAM



SPECIFICATIONS

Production speed*	up to 120 bags per minute
Bag length (min-max)	3.5-12.5" inches
Maximum product height	3 inches
Maximum product width	4.75 inches
Maximum film diameter	12.5 inches
Maximum film width	16 inches
Electrical requirements	220 Volt, 15 Amps, 1 Phase
Machine dimensions (LxWxH)	112" x 32" x 60"

* Subject to product, dosage and packaging material



Member of PAC Machinery Group



DARTRONICS, INC.

PACKAGING AUTOMATION SPECIALISTS



150 WILLIAM ST. PERTH AMBOY, NJ 08861 / TOLL FREE: 800-298-8936 / PHONE: 732-324-0800 / FAX: 732-324-4488

WWW.DARTRONICS.COM

YOUTUBE / DARTRONICS

THE SINGLE SOURCE FOR YOUR

END-OF-LINE

PACKAGING, MARKING AND CODING NEEDS