



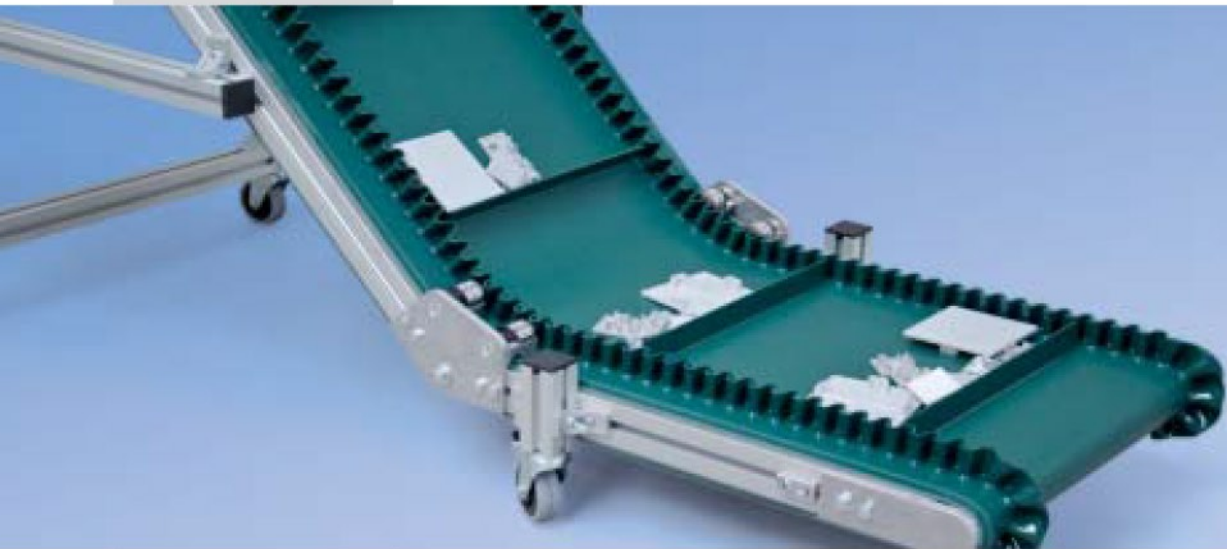
## mk Incline Conveyor KFG-P 2000 ECO



*High-Quality – Short Delivery Time – Inexpensive*



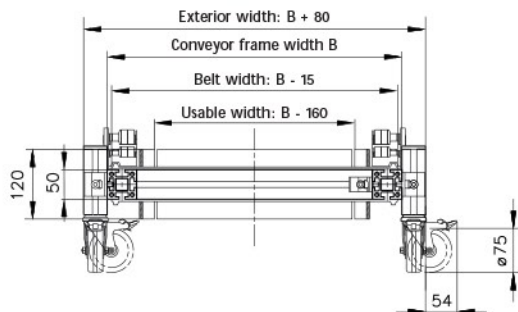
# Incline Conveyor KFG-P 2000 ECO



## *Advantages – mk Incline Conveyor ECO*

- High availability with short delivery times
- Inexpensive, despite high-quality material
- Can be configured quickly and easily
- Compact solution with a maximised usable width for integration into existing systems
- Conforms to the relevant Machinery Directive and Health and Safety regulations – no additional protective enclosure is required
- Different speeds can be ordered without a surcharge
- Belt can be replaced with minimum effort
- Speed control and indexable available via an optional frequency inverter
- Motor protection switch optional

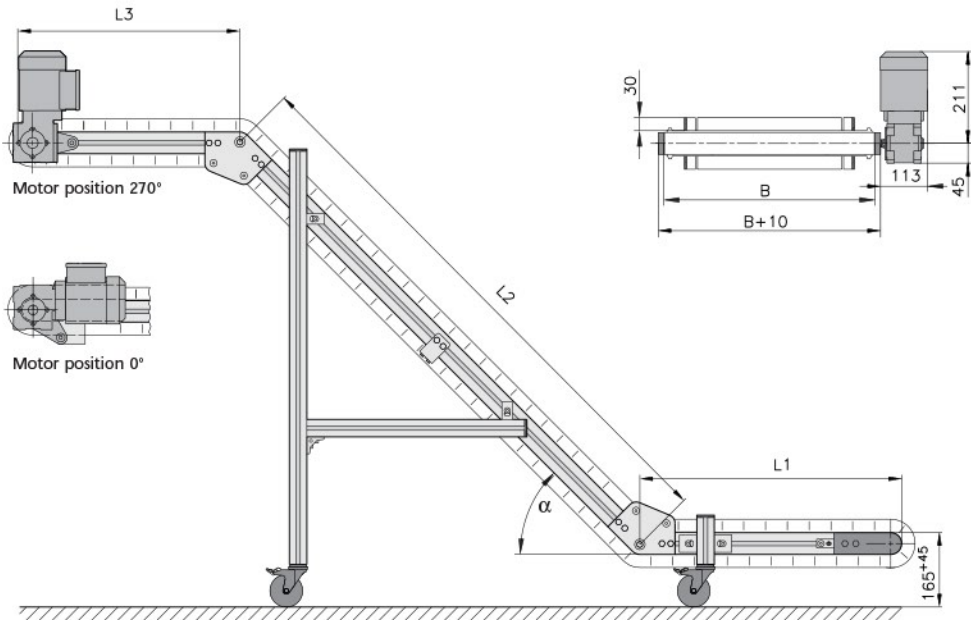
Cross section



# KFG-P 2000 ECO

*Incline Conveyor with Head Drive direct*

B20.00.015



## Features:

All required technical information is provided in the table, the drawing shows the dimensions and the structure of the KFG-P 2000 ECO.

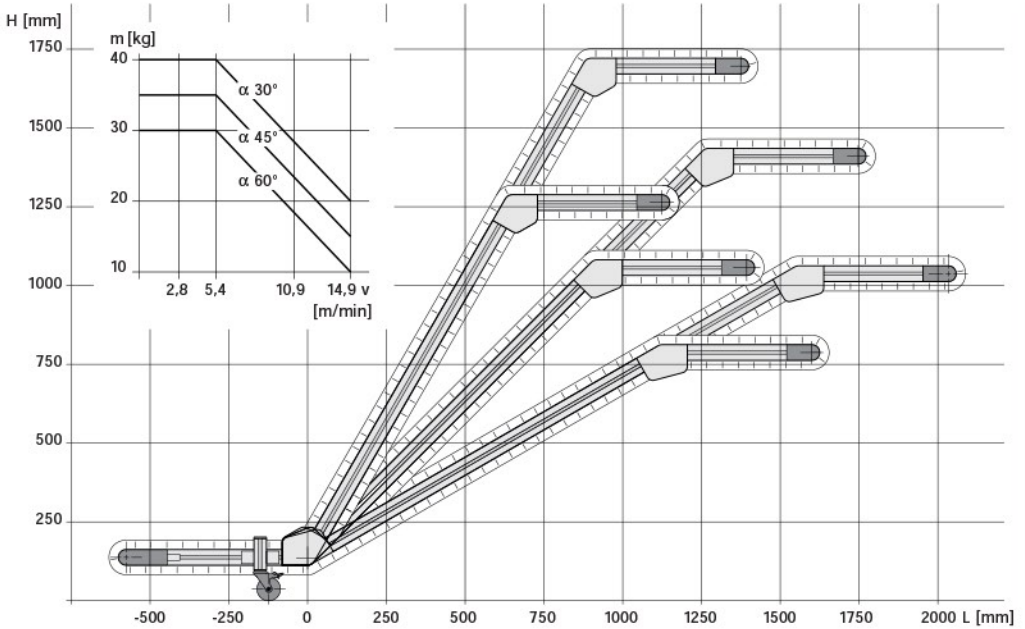
### Dimensions – Technical Information

Conveyor length L	L1 = 600 mm, L2 = 1300/1800 mm, L3 = 500 mm
Conveyor frame width B	400, 500, 600 mm (usable width: B - 160 mm)
Drive location	above, head left or right, motor position 270°, for additional charge 0°
Drive and Speed	2,8; 5,4;10,9;14,9 m/min, other speeds on request or via Reglomat
Load Capacity max.	depending on incline and speed up to 40 kg
Bends $\alpha$	30, 45 and 60°
Product	height to 55 mm, length to 300 mm, weight to 5 kg/compartment
Belt	Ropanyl EM 6/2 0+02 green M2 FG FDA, Urethane oil and grease resistant, laterally stiff, perm. temp. -10 - +80°C
Cleats and sidewalls	height lateral cleats MT30 and sidewalls 30 mm, Urethane, green for L2=1300 16 lateral cleats with cleat spacing of 303 mm for L2=1800 19 lateral cleats with cleat spacing of 308 mm

# KFG-P 2000 ECO

## Variants

B20.00.015



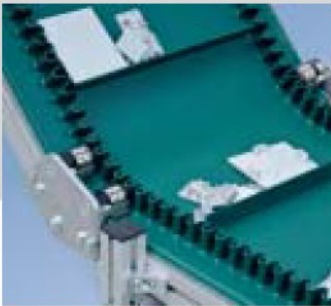
### Features:

See the table for the optimal variant for your application. Without additional information the conveyor is designed with a drive arrangement 270° top, front left, and speed 5.4 m/min.

Variant (L2 1300 mm)	A1	A2	A3	A4	A5	A6	A7	A8	A9
conveyor frame width B [mm]	400	400	400	500	500	500	600	600	600
Bends $\alpha$	30°	45°	60°	30°	45°	60°	30°	45°	60°

Variant (L2 1800 mm)	B1	B2	B3	B4	B5	B6	B7	B8	B9
conveyor frame width B [mm]	400	400	400	500	500	500	600	600	600
Bends $\alpha$	30°	45°	60°	30°	45°	60°	30°	45°	60°

# Incline Conveyor KFG-P 2000 ECO



## *Compact design for optimal integration into existing systems*

The KFG-P 2000 ECO conveyor is based on the mk 2000 profile and with its compact design is suitable for conveyance of all small parts. ECO is an abbreviation for economic and thus profitability – high material quality and fulfillment of customer requirements at an excellent price. The technology of the inclined conveyor is based on our GUF-P 2000 unit, which has been produced thousands of times and consequently is proven and reliable. Thanks to the limited number of variants fast delivery and high availability are ensured. The ECO incline conveyor conforms to

factory security regulations and can be delivered preset with various speeds. A motor protection switch or frequency inverter for controllability/cycle operation are available as optional accessories. A corrugated cleat edge serves as the side guide, transverse cleats serve as the carriers. With the optimal ratio of effective width to total width the conveyor is ideally suited for integration into existing systems, such as injection molding machines. Due to the mobility it can be used flexibly as a movable transport unit for filling containers or wire-mesh boxes.



**DARTRONICS, INC.**

PACKAGING AUTOMATION SPECIALISTS



150 WILLIAM ST. PERTH AMBOY, NJ 08861 / TOLL FREE: 800-298-8936 / PHONE: 732-324-0800 / FAX: 732-324-4488

WWW.DARTRONICS.COM

YOUTUBE / DARTRONICS

THE SINGLE SOURCE FOR YOUR

**END-OF-LINE**

PACKAGING, MARKING AND CODING NEEDS