

Belt Conveyors

better products. better solutions.

mk offers a wide range of Flat Belt Conveyors in various widths and custom lengths. The smooth, continuous surface of a conveyor belt is ideal for many product handling applications.

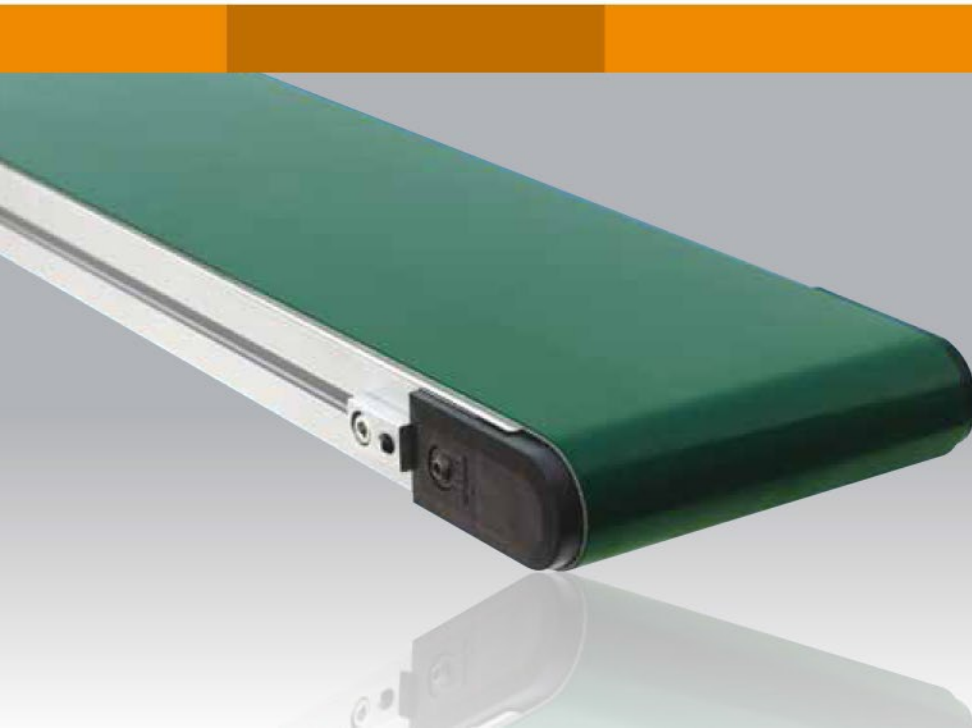
Constructed of mk structural T-slotted aluminum extrusions, all mk conveyors feature a wide selection of drives, stands, tails, side rails and hundreds of accessories.

Applications

- Parts Accumulation
- Small Parts Handling
- Testing & Inspection
- Incline & Decline Operations
- Printing, Labeling, Scanning & Marking
- Stamping
- Injection Molding
- Packaging

Features and Benefits

- Many models available in 5 days or less
- Quick 5 minute belt change
- Strong, box frame construction
- End drive and center drive models
- Sealed, high-quality ball bearings
- Stainless steel slider beds and crowned pulleys reduce belt wear
- Optional 10 mm nose bar transfer



economical

Belt Conveyors

□ GUF-P MINI

The GUF-P MINI conveyor features a low 35 mm frame height, ideal for small parts handling, tight spaces or slug removal. Available in three standard widths with a variety of drive and tail options.

Specifications

Frame: 35 mm (1.37") tall structural aluminum profile
 Width: 75 mm (2.95"), 100 mm (3.93"), 150 mm (5.91")
 Length: 310 mm (12.2") – 5,000 mm (196.9")
 Load: Up to 45 kg (100 lbs)
 Speed: Up to 60 mpm (200 fpm)



For light weight products and where space saving designs are needed.

□ GUF-P 2000

The GUF-P 2000 is our most popular and most versatile conveyor. We offer widths from 50 to 800 mm, a low profile 50 mm frame thickness, and a multitude of belt, drive, tail, stand and rail options. Over 50,000 sold worldwide.

Specifications

Frame: 50 mm (1.97") tall structural aluminum profile
 Width: 50 mm (1.97") – 800 mm (31.49")
 Length: 310 mm (12.2") – 10,000 mm (393.7")
 Load: Up to 140 kg (300 lbs)
 Speed: Up to 100 mpm (330 fpm)



For light and medium duty applications. Our most popular and most versatile belt conveyor.

□ GUF-P 2041

The GUF-P 2041 series conveyors are manufactured using our structural 40 x 80 mm profile. The result is a modular, heavy duty frame. The dual T-slots offer many opportunities for attaching stands, hoppers, sensors and side rails, etc.

Specifications

Frame: 80 mm (3.15") tall structural aluminum profile
 Width: 200 mm (7.87") – 1,200 mm (47.24")
 Length: 550 mm (21.65") – 10,000 mm (393.7")
 Load: Up to 225 kg (500 lbs)
 Speed: Up to 150 mpm (500 fpm)



For heavy duty applications. Rigid aluminum frame construction.

□ KGF-P 2040

Belt curve conveyor system KGF-P 2040 is based on our 40 mm Profile Series and is compatible with all other mk conveyor systems. The compact construction simplifies the integration of the conveyor within existing lines. The system features a self-tensioning Ø 20 mm rolling nose bar which allows for the transfer of small parts.

Specifications

Width: 300 mm (11.8"), 400 mm (15.7"), 500 mm (19.7")
 and 600 mm (23.6") usable widths
 Angles: 60°, 90°, and 180°
 Load: Up to 35 kg (75 lbs)
 Speed: Up to 45 mpm (150 fpm)



Available in 60°, 90° and 180° angles and different widths.

Belt Conveyors



*For light to medium duty applications.
Offered in different widths and configurations.*

□ Incline Belt Conveyors

If you need to incline or decline a product to match a production line or to provide ergonomic support to an employee, our incline conveyors provide the necessary flexibility. mk incline conveyors feature either adjustable or pre-set pivot points to provide maximum flexibility.

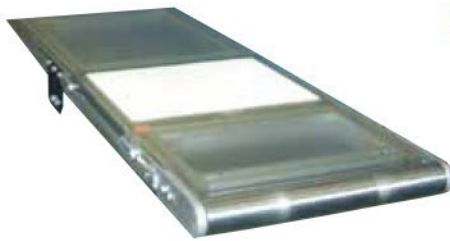
Features

Width: 300 mm (11.8") – 700 mm (27.5")

Length: 1,000 mm (39.7") – 10,000 mm (393.7")

Nose over, horizontal to incline, Z-frame and walk-thru configurations

Adjustable angle frames conform to applications



Ideal for vision applications.

□ Back-Lit Conveyors

Back-Lit Conveyors are used to provide a greater contrast between the product and the conveyor belt. They are ideal for vision inspection applications – both manual and machine controlled. A light panel is integrated within the frame of our GUF-P 2000 series conveyor and emits light through a transparent belt.

Features

Width: 200 mm (7.9") – 500 mm (19.7")

Length: 550 mm (21.6") – 5,000 mm (197")

Static dissipative polycarbonate cover dramatically reduces the amount of static emitted

Fluorescent and LED light panels available

On/Off switch integrated within the conveyor frame



Space saving design for quick and easy access.

□ Lift Gate

Lift Gate Conveyors are perfect for those locations where access to the other side of a production line is required. We can configure our mounting design to suit your particular process.

Features

Width: 50 mm (1.97") – 600 mm (23.6")

Length: 600 mm (23.6") – 1,400 mm (55.1")

Speed: Up to 80 mpm (265 fpm)

Stand alone and line integrated designs

Gas shock controlled pivot mechanism

Vertical position stop



Perfect for high speeds and light products.

□ Vacuum Conveyors

Vacuum Conveyors are used in a variety of applications. They hold light or flat parts against the belt or they can be used to assist in elevation changes. This is the perfect solution for transporting small parts or documents at high speeds.

Features

Width: 50 mm (1.97") – 1,200 mm (47.2")

Length: 500 mm (19.7") – 10,000 mm (393.7")

Speed: 180 mpm (600 fpm)

End drive and center drive compatible

Variety of tail options

Belt Conveyors

□ Magnetic Conveyors

Magnetic Conveyors are used in a variety of applications – they hold ferrous parts tight against the conveyor belt, they can be used in elevation change applications, and can be used in upside down applications.

Features

Frame: 50 mm (1.97") tall structural aluminum profile

Width: 50 mm (1.97") – 800 mm (31.49")

Length: 310 mm (12.2") – 10,000 mm (393.7")

Load: Up to 35 kg (75 lbs)

Speed: Up to 50 mpm (165 fpm)

Accumulation is allowed in some applications

Increase and decrease strength zones available for smaller products



For use in elevation change applications and in upside down applications.

□ Cleated Conveyors

Cleated belts are commonly used to control products on a horizontal or inclined conveyor. mk offers longitudinal and lateral cleats as well as side walls. Cleats come in a variety of sizes and shapes and can even be applied on an angle for improved product control.

Features

Incline and Decline Operations

Indexing

Product Placement



For controlling products on a horizontal or inclined conveyor.

□ V-Guided Conveyors

V-Guided Conveyors provide positive belt tracking for a variety of conveyors including side-running, side-loading, side-discharge or continuously reversing operations.

Features

Frame: 50 mm (1.97") tall structural aluminum profile

Width: 50 mm (1.97") – 800 mm (31.49")

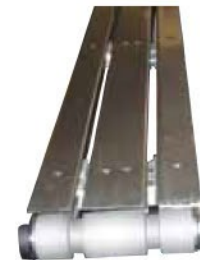
Length: 310 mm (12.2") – 10,000 mm (393.7")

Load: Up to 100 kg (220 lbs)

Speed: Up to 50 mpm (165 fpm)

End drive or center drive conveyors

Positive belt tracking



Perfect for side-loading applications.

□ Multi-Lane Conveyors

Two or more conveyors can be driven from a single motor using a common drive shaft or coupled shafts. Multi-Lane Conveyors are ideal for the transport of pallets or large and bulky products.

Features

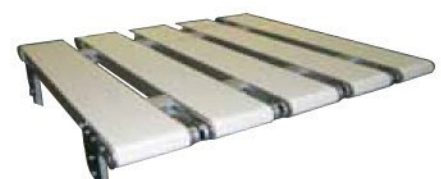
Conveyors move at the same relative belt speed

Creates single lanes for handling parts.

Conveyors can be of different widths and lengths.

Wide parts can be carried by narrow conveyors.

Access between lanes from underneath for scanners, lift and transfers, etc.



Cost-effective solution to carry wide parts.

Application Examples



- GUF-P 2000 Belt Conveyor
Two-tiered system with GUF-P 2000 conveyors on common stand



- KGF-P 2040 Curve Conveyor
90° transfer using KGF-P 2040 conveyor between GUF-P 2041 conveyors



- GUF-P 2041 Belt Conveyor
Special width of 1,400 mm



- MBF-P 2040.02 Conveyor
Special modular plastic belt with attachments



- GUF-P 2000 Belt Conveyor
Metal detector. Conveyor frame constructed with mk wood profile



- MBF-P 2040.02 Conveyor
90 mm wide modular plastic belt and adjustable side rails



- KGF-P 2000 Incline Conveyor
Stainless steel hopper on KGF-P 2000 conveyor

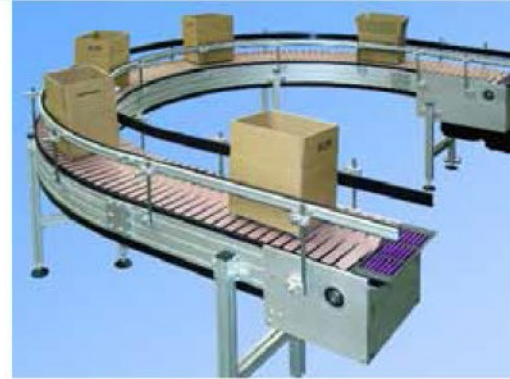


- RPT-P 2255 Roller Conveyor
RBT-P 2255 conveyor with integrated ZRF-P 2010 lift and transfer conveyor

Application Examples



- RBT-P 2255 Roller Conveyor
Combination of tangential chain and driven roller conveyors



- SBF-P 2000 Conveyor
180° curve with 7.5" flat top chain and adjustable side rails



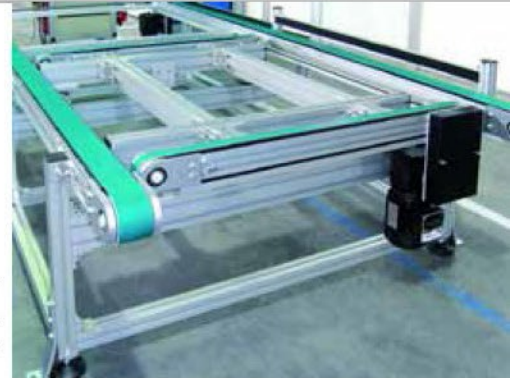
- KTF-P 2010 Chain Conveyor
Special attachment chain for transport of cam shafts



- SRF-P 2012 Chain Conveyor
Recirculating pallet conveyor system with low friction accumulating chain, transfers and adjustable side rails



- SBF-P 2000 Conveyor
Heavy duty steel chain with welded cleats



- ZRF-P 2040.02 Timing Belt Conveyor
Combination of ZRF-P 2040.02 conveyor with ZRF-P 2010 as transfer conveyor



- SBF-P 2254 Conveyor
Table top chain conveyor with incline and transfer module



- SRF-P 2012 Chain Conveyor
SRF-P 2012 with lift and transfer unit KTF-P 2010



DARTRONICS, INC.

PACKAGING AUTOMATION SPECIALISTS



150 WILLIAM ST. PERTH AMBOY, NJ 08861 / TOLL FREE: 800-298-8936 / PHONE: 732-324-0800 / FAX: 732-324-4488

WWW.DARTRONICS.COM

YOUTUBE / DARTRONICS

THE SINGLE SOURCE FOR YOUR

END-OF-LINE

PACKAGING, MARKING AND CODING NEEDS