

Roller Conveyors

better products. better solutions.

The mk roller conveyor system can transport loads up to 300 kg and allows the user a great deal of freedom for fast, simple and cost-effective system planning or extensions - even for long production lines. Products can be transported either on a workpiece pallet or directly on the continuous roller track.

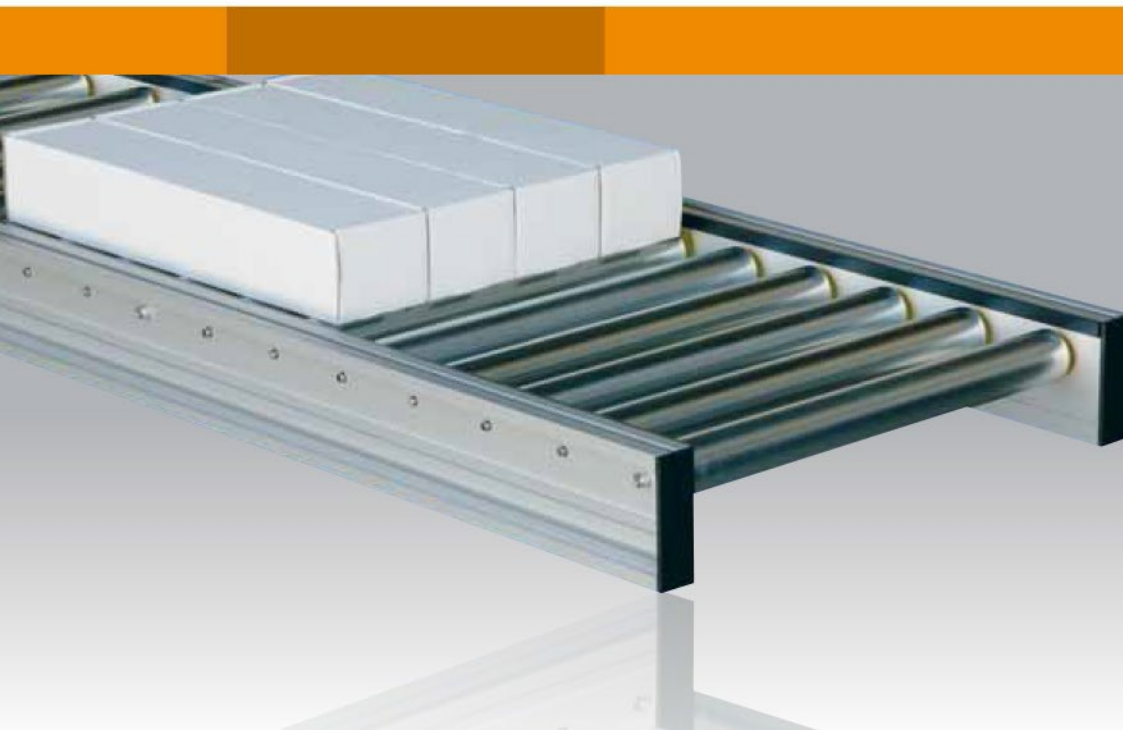
The modular design enables the combination of all system components with each other.

Applications

- Packaging
- Sorting
- Material Handling
- Curves
- Accumulation
- Diverting
- Transfers
- Assembly

Benefits

- Efficient transfer system for high loads
- Implementation of any layout with a few standard modules
- Maintenance-free roller conveyor system
- Modular system with defined interfaces



dependable

Roller Conveyors

□ RBS-P 2065

The RBS-P 2065 and 2066 gravity roller conveyors are designed for light to medium weight products. Gravity roller conveyors are most often used for picking applications, as accumulation storage or within an assembly and packaging line. This series of gravity roller conveyors feature customizable roller spacing, height and diameter.

Specifications

Available in widths starting at 100 mm (3.9")
 Available in lengths up to 5,000 mm (197")
 Load: Up to 280 kg (600 lbs)



Available in straight and curved sections.

□ RBS-P 2255

The RBS-P 2255 conveyor is a gravity roller conveyor designed for light to medium weight products. Gravity roller conveyors are most often used for picking applications, as accumulation storage or within an assembly and packing line. The RBS-P 2255 stands out from other gravity roller conveyors because of the optional covers and end caps available, which make this a very aesthetic and clean looking module.

Specifications

Available in widths starting at 290 mm (11.4")
 Available in lengths up to 5,000 mm (197")
 Constructed using our mk 2255 profile
 120 mm (4.7") tall anodized aluminum frame
 There is a longitudinal t-slot along the top and bottom of each side of the frame



Highly aesthetic gravity roller conveyor available in straight and curved sections.

□ RBM-P 2255

The Drive Roller Conveyor features a motorized roller which drives up to nine additional rollers. With this type of drive segmentation, it is possible to design these conveyors with varying speeds or start/stop functions. This allows application possibilities such as segmentation of products, stopping and storage, whereby more complex system processes can be supported. The speed and direction of the motorized rollers is accomplished using a control module.

Specifications

Frame: 120 mm (4.72") tall
 Width: 380 mm (14.9") – 680 mm (26.7")
 Length: 500 mm (19.7") – 5,000 mm (197")
 Load: Up to 55 kg (120 lbs)
 Speed: Up to 70 mpm (230 fpm)



The Drive Roll Conveyors are available in straight or curved sections, and can be combined with other System 2255 conveyors (RBS and RBT).

□ RBT-P 2255

The RBT-P 2255 model is a tangential chain roller conveyor. The rollers feature sprockets which are all driven together via a continuous strand of chain and powered by an external motor. With this design longer lengths and higher loads are capable of being conveyed.

Specifications

Frame: 120 mm (4.72") tall
 Width: from 420 mm (16.5")
 Length: from 600 mm (23.6")
 Load: Up to 100 kg (220 lbs)
 Speed: Up to 80 mpm (262 fpm)



For heavy duty applications. Rigid aluminum frame construction.

Application Examples



- GUF-P 2000 Belt Conveyor
Two-tiered system with GUF-P 2000 conveyors on common stand

- KGF-P 2040 Curve Conveyor
90° transfer using KGF-P 2040 conveyor between GUF-P 2041 conveyors



- GUF-P 2041 Belt Conveyor
Special width of 1,400 mm

- MBF-P 2040.02 Conveyor
Special modular plastic belt with attachments



- GUF-P 2000 Belt Conveyor
Metal detector. Conveyor frame constructed with mk wood profile

- MBF-P 2040.02 Conveyor
90 mm wide modular plastic belt and adjustable side rails



- KGF-P 2000 Incline Conveyor
Stainless steel hopper on KGF-P 2000 conveyor

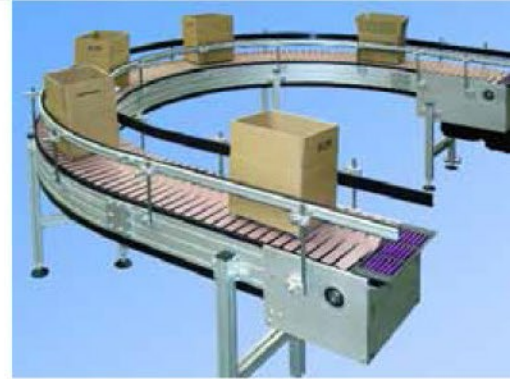
- RPT-P 2255 Roller Conveyor
RBT-P 2255 conveyor with integrated ZRF-P 2010 lift and transfer conveyor



Application Examples



- RBT-P 2255 Roller Conveyor
Combination of tangential chain and driven roller conveyors



- SBF-P 2000 Conveyor
180° curve with 7.5" flat top chain and adjustable side rails



- KTF-P 2010 Chain Conveyor
Special attachment chain for transport of cam shafts



- SRF-P 2012 Chain Conveyor
Recirculating pallet conveyor system with low friction accumulating chain, transfers and adjustable side rails



- SBF-P 2000 Conveyor
Heavy duty steel chain with welded cleats



- ZRF-P 2040.02 Timing Belt Conveyor
Combination of ZRF-P 2040.02 conveyor with ZRF-P 2010 as transfer conveyor



- SBF-P 2254 Conveyor
Table top chain conveyor with incline and transfer module



- SRF-P 2012 Chain Conveyor
SRF-P 2012 with lift and transfer unit KTF-P 2010



DARTRONICS, INC.

PACKAGING AUTOMATION SPECIALISTS



150 WILLIAM ST. PERTH AMBOY, NJ 08861 / TOLL FREE: 800-298-8936 / PHONE: 732-324-0800 / FAX: 732-324-4488

WWW.DARTRONICS.COM

YOUTUBE / DARTRONICS

THE SINGLE SOURCE FOR YOUR

END-OF-LINE

PACKAGING, MARKING AND CODING NEEDS